

Farmpacker 40

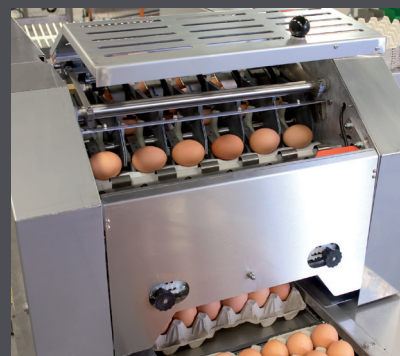
Unpack, plug in and pack eggs

The STAALKAT Farmpackers, what you see is what you get. Successful design is more than just shapes and great lines. It's also about sensing that the equipment is exactly right. A dynamic, robust design, with the smallest footprint, made to pack eggs in the most natural way – straight line, point down!

Thanks to their outstanding performance, proven robustness, low energy consumption and easy maintenance, the STAALKAT Farmpackers are your best choice day in and day out. This is why the STAALKAT Farmpackers are found in all corners of the world.

Every STAALKAT Farmpacker is created with the guiding principle that they should be easy to use, so you can focus on getting your eggs packed and spend less time figuring out how to maintain, determine replacement parts and worrying about up time. If you've never owned a STAALKAT Farmpacker, chances are you will know it inside and out in no time.

The STAALKAT Farmpackers are designed with your farm environment in mind. Simple, robust, reliable and flexible. Maximum up-time – 100% correct packing – easy to maintain.



FEATURES:

- 14,400 eggs/hour (40 cases/hour)
- Low maintenance
- Easy cleaning
- Gentle egg handling
- Packing head for perfect point down filling of every tray
- Simple control

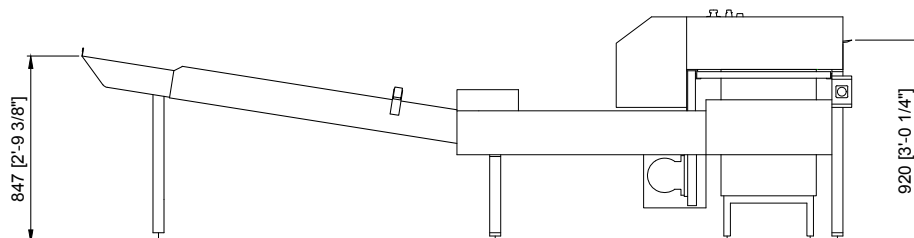
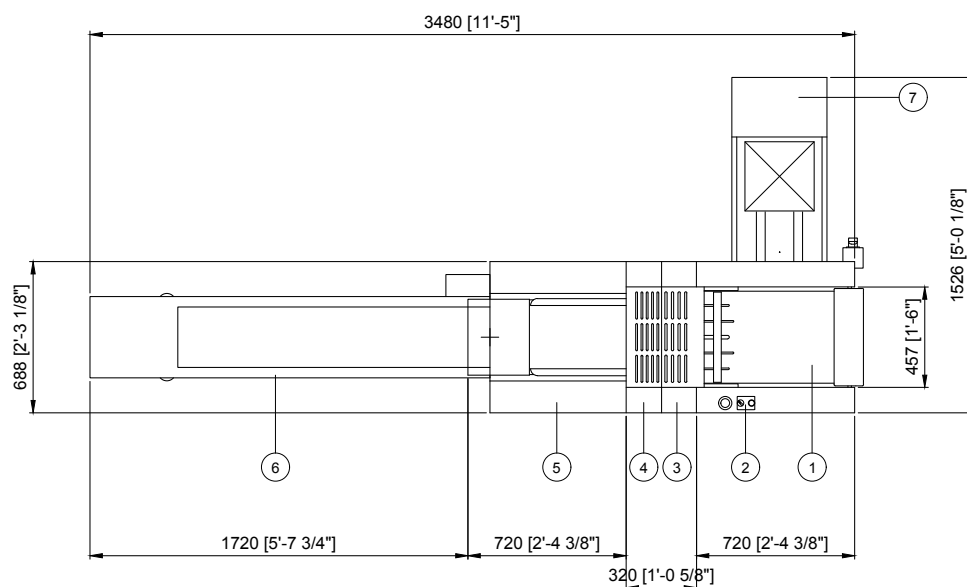
SAFETY AND SERVICE

All SANOVO products and systems are designed to meet the industry safety standards.

A comprehensive service organisation is always available to assist in the selection of the right maintenance programme or individual spare part.

TECHNICAL DATA

| | |
|------------------------|--|
| Max Capacity: | 40 cases/hour (14,400 eggs/hour) |
| Installation anywhere: | 5.4 m ² |
| Energy: | 0.3 kVA |
| Power supply: | 230 V-0-ground, 1.0-phase-AC, 50/60 Hz |



| | |
|---|--------------------|
| 1 | Accumulator |
| 2 | Operator panel |
| 3 | Egg orientaion |
| 4 | Packing head |
| 5 | Tansport lane |
| 6 | Take away conveyor |
| 7 | Denester |



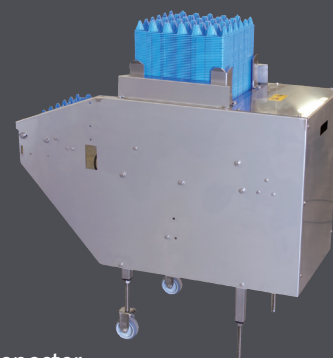
Accumulator



Take away conveyor



Simple control



Denester